

FRONTMATEC

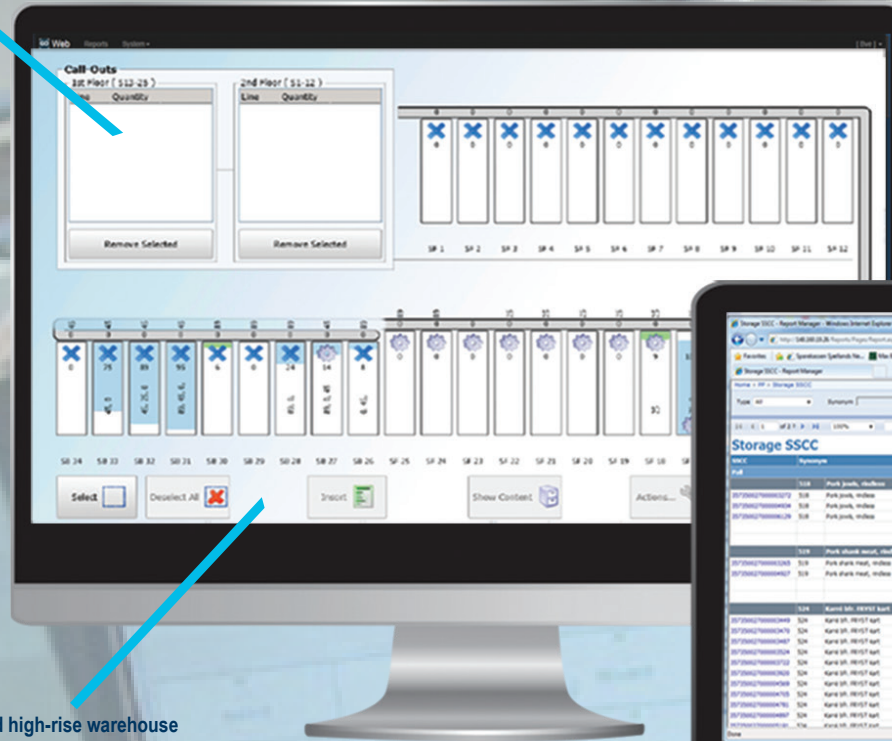
Reduce the amount of work
in progress and inventory obsolescence

GO.WMS



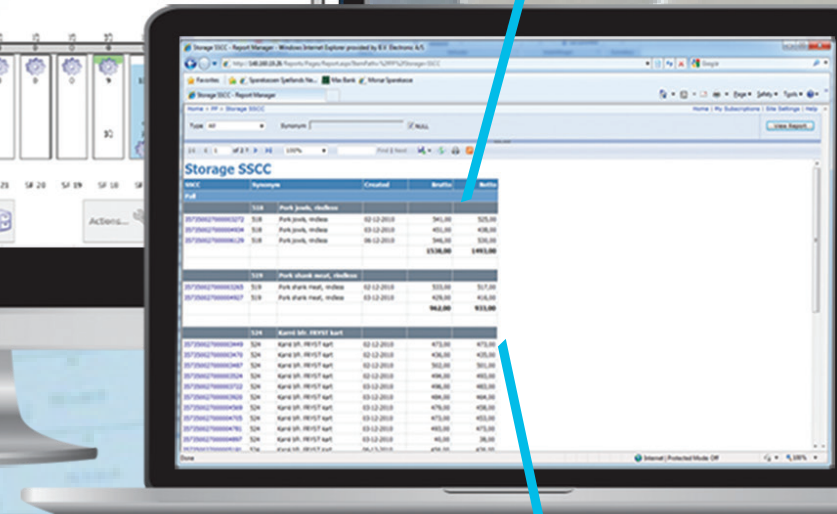
Automated cold-storage

- Warehouse management
- Category/filter rules option
- Stock overview



Route Management

- Of goods to and from locations
- Configurable FIFO
- Dynamic planning
- RFID or 1D/2D bar code



Automated high-rise warehouse

- Crane control servo/PLC Location
- Load balancing between cranes
- Zone divided warehouse Operation optimization

Manual warehouse

- Manual picking instructions
- Guided packing processes
- Warehouse overview and stock count

"We have a great partnership with Frontmatec which in my opinion has unique expertise and solutions when it comes to production software for the food industry. They are an incredibly dynamic company that contributes with new solutions in a fast pace. This helps us to ensure that we are constantly developing our business in Danish Crown. They never fail us."

- Steen Johansen, Chief Engineer, Danish Crown

Manage your warehouse with GO.WMS

How do we achieve better inventory productivity and reduce our inventory obsolescence?

Is it possible to integrate FIFO in our warehouse management?

What do you achieve?

Minimize your inventory obsolescence and outdated items. The system provides you full traceability on relevant articles.

GO.WMS helps you automate and streamline the management of articles to and from the warehouse and also reduce the amount of articles stored in the warehouse. The system also offers FIFO and other warehouse rules.

GO.WMS (Warehouse Management System) is a complete stock system, which gives you the full overview of your stock. The module handles both registration of articles, labelling, route control and warehouse management. The system can be integrated with active warehouse racks and ensure correct picking and tracking.

The value you get

- Fully traceability
The system conforms to customer and authority demands with full traceability. It is always possible to track and manage your inventory in real time
- Reduced inventory obsolescence
GO.WMS ensures you better inventory productivity, shorter turnaround on orders, secure identification of goods, FIFO and batch management and fewer picking errors – reduced inventory obsolescence
- Optimization
The system provides fully automated inventory management that optimise all work processes in the warehouse
- Higher quality
GO.WMS also makes it easier to track and isolate quality issues such as defects, deficiencies and significant variations

FRONTMATEC

Frontmatec develops world-leading customized solutions for automation in the food industry, other hygiene sensitive industries and the utilities industry. We are especially renowned for our high-quality systems for the entire value chain of the meat industry – from carcass grading, slaughter lines, cutting and deboning lines, hygiene systems and control systems, to logistics and packaging.

Barcelona, Spain
Phone: +34 932 643 800
E-mail: barcelona@frontmatec.com

Beckum, Germany
Phone: +49 252 185 070
E-mail: beckum@frontmatec.com

Birmingham, UK
Phone: +44 121 313 3564
E-mail: birmingham@frontmatec.com

Grodzisk Mazowiecki, Poland
Phone: +48 227 345 551
E-mail: grodzisk@frontmatec.com

Jining, China
Phone: +86 537 371 3266
E-mail: jining@frontmatec.com

Kansas City, MO, US
Phone: +1 816 891 2440
E-mail: kansascity@frontmatec.com

Kolding, Denmark
Phone: +45 763 427 00
E-mail: kolding@frontmatec.com

Lünen, Germany
Phone: +49 2306 7560 680
E-mail: luenen@frontmatec.com

Moscow, Russia
Phone: +7 495 424 9559
E-mail: moscow@frontmatec.com

Rijssen, the Netherlands
Phone: +31 886 294 000
E-mail: rjssen@frontmatec.com

Shanghai, China
Phone: +86 215 859 4850
E-mail: shanghai@frontmatec.com

Skive, Denmark
Phone: +45 975 250 22
E-mail: skive@frontmatec.com

Smørum, Denmark
Phone: +45 445 037 00
E-mail: smoerum@frontmatec.com

St. Anselme, QC, Canada
Phone: +1 418 885 4493
E-mail: quebec@frontmatec.com

Tandslet, Sydals, Denmark
Phone: +45 744 076 44
E-mail: tandslet@frontmatec.com

frontmatec.com